

**UBE2C Antibody (C-term)**  
**Purified Mouse Monoclonal Antibody (Mab)**  
**Catalog # AM8672b****Specification**

---

**UBE2C Antibody (C-term) - Product Information**

Application	WB,E
Primary Accession	<a href="#">O00762</a>
Other Accession	<a href="#">Q32PA5</a> , <a href="#">Q4R9D1</a> , <a href="#">Q9D1C1</a>
Reactivity	Human
Predicted	Bovine, Monkey, Mouse
Host	Mouse
Clonality	monoclonal
Isotype	IgG1, $\kappa$
Calculated MW	19652

**UBE2C Antibody (C-term) - Additional Information****Gene ID** 11065**Other Names**

Ubiquitin-conjugating enzyme E2 C, 6.3.2.19, UbcH10, Ubiquitin carrier protein C, Ubiquitin-protein ligase C, UBE2C, UBCH10

**Target/Specificity**

This UBE2C antibody is generated from a mouse immunized with a KLH conjugated synthetic peptide between 137~172 amino acids from the C-terminal region of human UBE2C.

**Dilution**

WB~~1:2000

E~~Use at an assay dependent concentration.

**Format**

Purified monoclonal antibody supplied in PBS with 0.09% (W/V) sodium azide. This antibody is purified through a protein G column, followed by dialysis against PBS.

**Storage**

Maintain refrigerated at 2-8°C for up to 2 weeks. For long term storage store at -20°C in small aliquots to prevent freeze-thaw cycles.

**Precautions**

UBE2C Antibody (C-term) is for research use only and not for use in diagnostic or therapeutic procedures.

**UBE2C Antibody (C-term) - Protein Information****Name** UBE2C

## Synonyms UBCH10

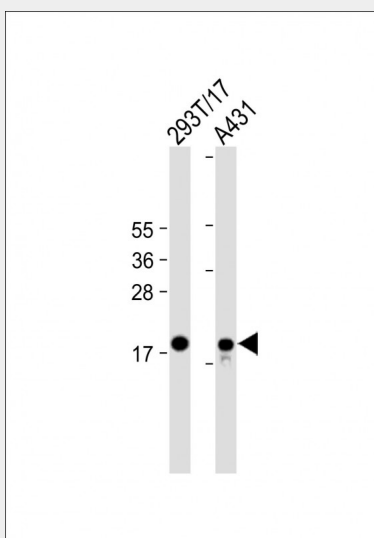
**Function** Accepts ubiquitin from the E1 complex and catalyzes its covalent attachment to other proteins. In vitro catalyzes 'Lys-11'- and 'Lys-48'-linked polyubiquitination. Acts as an essential factor of the anaphase promoting complex/cyclosome (APC/C), a cell cycle-regulated ubiquitin ligase that controls progression through mitosis. Acts by initiating 'Lys-11'-linked polyubiquitin chains on APC/C substrates, leading to the degradation of APC/C substrates by the proteasome and promoting mitotic exit.

## UBE2C Antibody (C-term) - Protocols

Provided below are standard protocols that you may find useful for product applications.

- [Western Blot](#)
- [Blocking Peptides](#)
- [Dot Blot](#)
- [Immunohistochemistry](#)
- [Immunofluorescence](#)
- [Immunoprecipitation](#)
- [Flow Cytometry](#)
- [Cell Culture](#)

## UBE2C Antibody (C-term) - Images



All lanes : Anti-UBE2C Antibody (C-term) at 1:2000 dilution Lane 1: 293T/17 whole cell lysate Lane 2: A431 whole cell lysate Lysates/proteins at 20 µg per lane. Secondary Goat Anti-mouse IgG, (H+L), Peroxidase conjugated at 1/10000 dilution. Predicted band size : 20 kDa Blocking/Dilution buffer: 5% NFDM/TBST.

## UBE2C Antibody (C-term) - Background

Accepts ubiquitin from the E1 complex and catalyzes its covalent attachment to other proteins. In vitro catalyzes 'Lys- 11'- and 'Lys-48'-linked polyubiquitination. Acts as an essential factor of the anaphase promoting complex/cyclosome (APC/C), a cell cycle-regulated ubiquitin ligase that controls progression through mitosis. Acts by initiating 'Lys-11'-linked polyubiquitin chains on APC/C substrates, leading to the degradation of APC/C substrates by the proteasome and promoting mitotic exit.

**UBE2C Antibody (C-term) - References**

Townsley F.M.,et al.Proc. Natl. Acad. Sci. U.S.A. 94:2362-2367(1997).  
Kalnine N.,et al.Submitted (OCT-2004) to the EMBL/GenBank/DDBJ databases.  
Deloukas P.,et al.Nature 414:865-871(2001).  
Mural R.J.,et al.Submitted (SEP-2005) to the EMBL/GenBank/DDBJ databases.  
Rape M.,et al.Nature 432:588-595(2004).